



*Total Solution Provider in Saw Device*

---

# SL06019AV

60.0 MHz IF SAW Filter  
19.6 MHz Bandwidth  
Revision 0: 7. APR. 2008



- Electrical Characteristics
  - Package Dimensions
  - Testing Environment
  - Frequency Characteristics
- 

**SAWNICS Inc.**

---

460 Cheonheung-ri, Seonggeo-eup, Cheonan-si, Chungcheongnam-do, 330-836 / Korea.  
Tel: +82 41 550 9372 / Fax: +82 41 550 9399 / [www.sawnics.com](http://www.sawnics.com)

## □ Electrical Characteristics

### Maximum Ratings

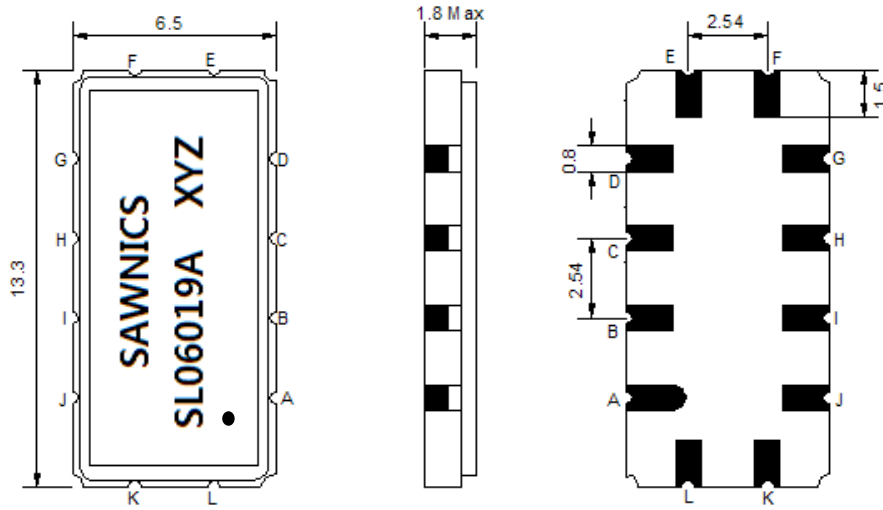
Parameters Description	Unit	Minimum	Typical	Maximum
Operation Temperature Range	°C	0		70
Storage Temperature Range	°C	-30	-	80
Maximum DC Voltage	V	-	-	10
Maximum Input Power	dBm	-	-	10
Source Impedance (single ended) <sup>(1)</sup>	Ω	-	50	-
Load Impedance (single ended) <sup>(1)</sup>	Ω	-	50	-
Package type & size	V			
Length x Width	mm <sup>2</sup>	-	13.3 x 6.5	-
Height	mm	-	-	1.8

### Electrical Specification

Parameters Description	Unit	Minimum	Typical	Maximum
Center Frequency (Fo)	MHz	-	60.0	-
Insertion Loss at Fo	dB	-	14.1	16.0
Group Delay Variation (Fo±9.22MHz)	ns	-	30	80
Absolute Delay	us	-	1.34	-
Passband Ripple (Fo±9.22MHz)	dB	-	0.55	1.0
Bandwidth at -1dB	MHz	18.44	19.6	-
Bandwidth at -10dB	MHz	-	21.7	22.3
Bandwidth at -20dB	MHz	-	22.4	23.0
Bandwidth at -30dB	MHz	-	23.1	23.6
Bandwidth at -40dB	MHz	-	23.8	-
Ultimate Rejection	dB	40	45	-
Temperature Coefficient of Frequency	ppm/°C		-86	

**Notes :** (1) With Matching Network (Ref. Testing Environment Circuit as shown below).  
Those impedances could be modified with different impedance values and/or structures, if necessary.

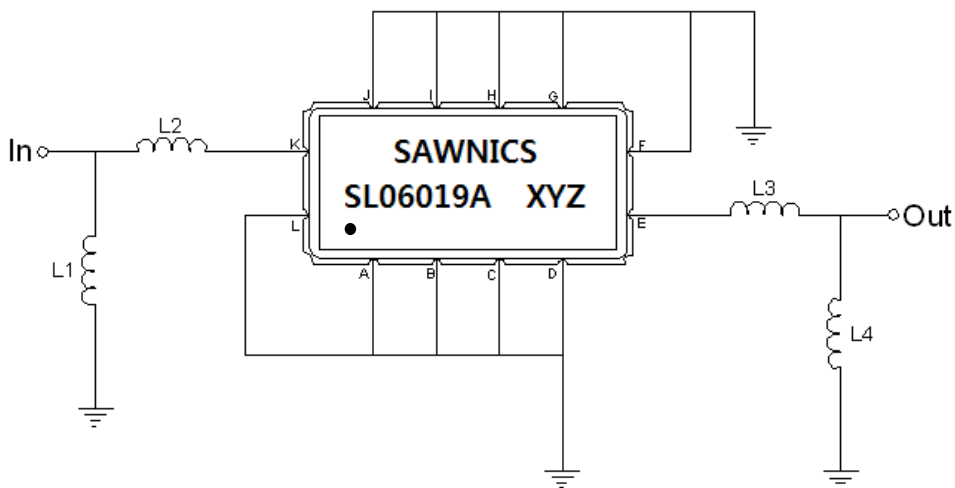
### Package Dimensions



- ① SAWNICS: Brand
- ② SL06019A: Model Name
- ③ X : Date Code (Year)
- ④ Y : Date Code (Month)
- ⑤ Z : Date Code (Date)
- : Index Dot

Pin Description	
A, B, C, D, F, G, H, I, J, L	Ground
K	Input
E	Output

### Testing Environment



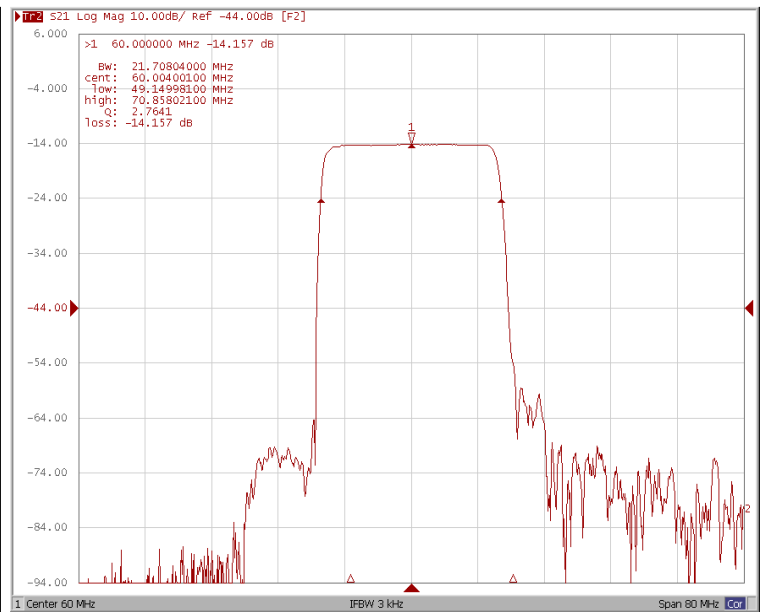
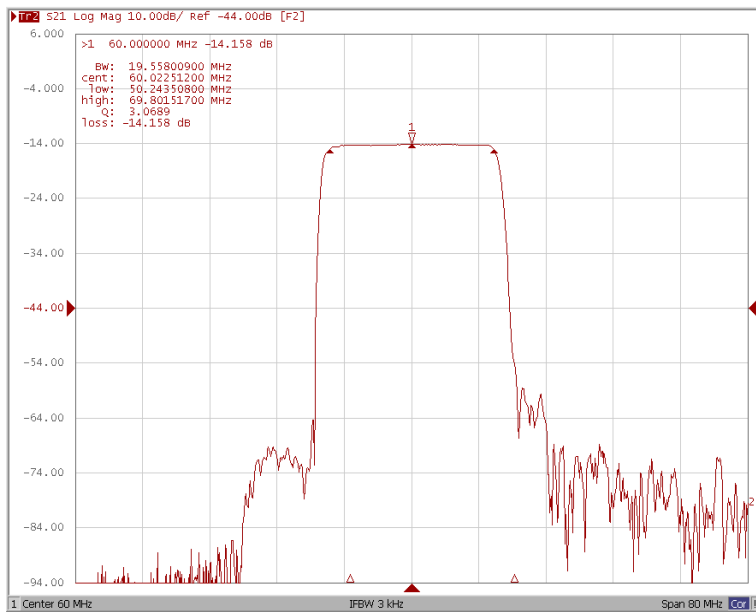
Test Fixture & Values	
Input	L1=82 nH, L2=22 nH
Output	L3=27 nH, L4=150 nH
Source/Load Impedance	50 Ω

### Frequency Characteristics

#### Frequency Response

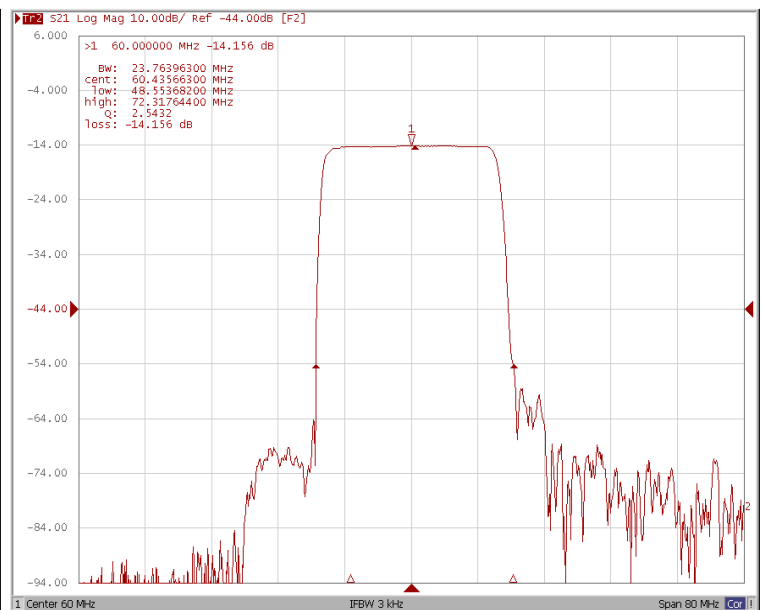
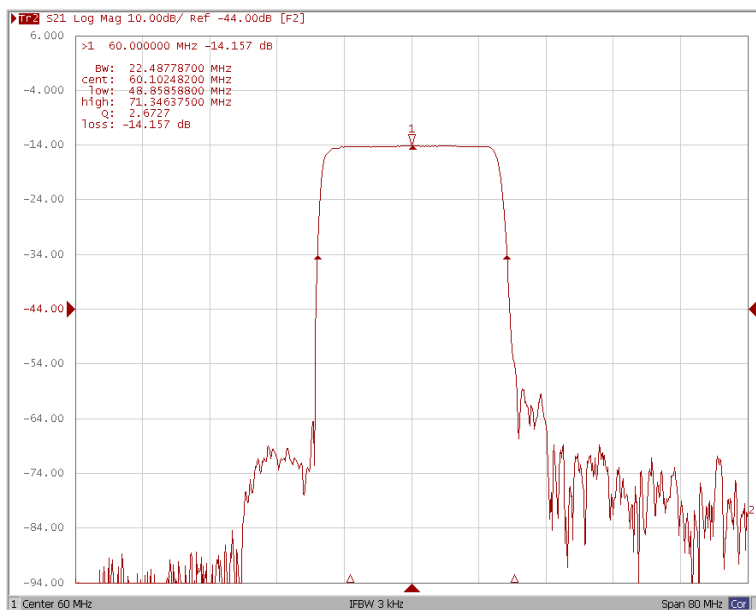
Bandwidth at -1.0 dB

Bandwidth at -10.0 dB



Bandwidth at -20.0 dB

Bandwidth at -40.0 dB

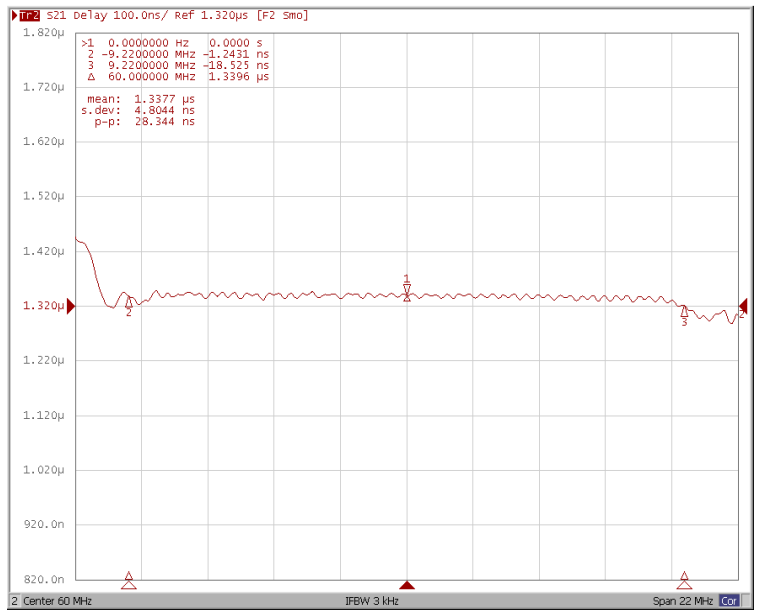
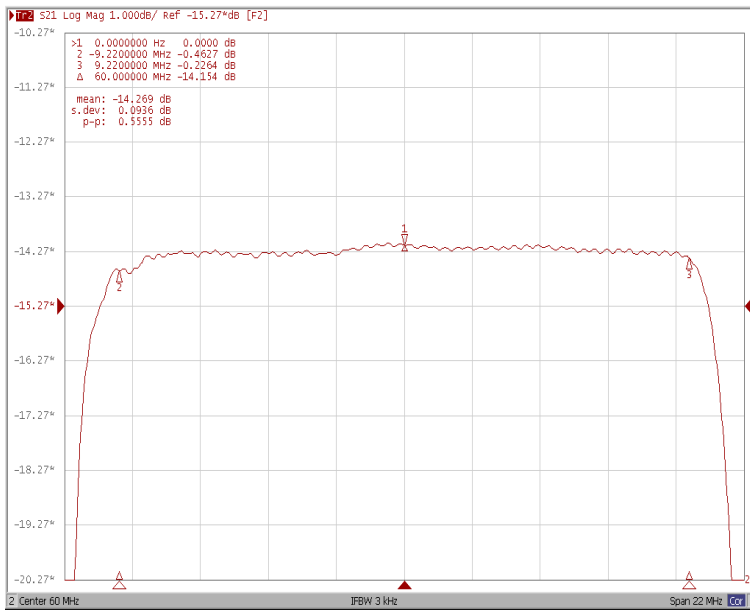


### □ Frequency Characteristics

#### Frequency Response

Ripple Variation  $F_o \pm 9.22\text{MHz}$

Group Delay Variation  $F_o \pm 9.22\text{MHz}$



Smith Chart

VSWR

